

NDA 18-147/S-029

Page 3

**FELDENE®**  
**(piroxicam)**  
**CAPSULES**  
**10 mg and 20 mg**  
*For Oral Use*

**Cardiovascular Risk**

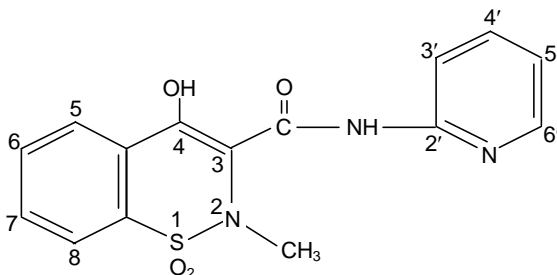
- NSAIDs may cause an increased risk of serious cardiovascular thrombotic events, myocardial infarction, and stroke, which can be fatal. This risk may increase with duration of use. Patient's with cardiovascular disease or risk factors for cardiovascular disease may be at greater risk (see **WARNINGS** and **CLINICAL TRIALS**).
- FELDENE® is contraindicated for the treatment of peri-operative pain in the setting of coronary artery bypass graft (CABG) surgery (see **WARNINGS**).

**Gastrointestinal Risk**

- NSAID's cause an increased risk of serious gastrointestinal adverse events including bleeding, ulceration, and perforation of the stomach or intestines, which can be fatal. These events can occur at any time during use and without warning symptoms. Elderly patients are at greater risk for serious gastrointestinal events (See **WARNINGS**).

**DESCRIPTION**

FELDENE® contains piroxicam which is a member of the oxicam group of nonsteroidal anti-inflammatory drugs (NSAIDs). Each maroon and blue capsule contains 10 mg piroxicam, each maroon capsule contains 20 mg piroxicam for oral administration. The chemical name for piroxicam is 4-hydroxyl-2-methyl-N-2-pyridinyl-2H-1,2-benzothiazine-3-carboxamide 1,1-dioxide. Piroxicam occurs as a white crystalline solid, sparingly soluble in water, dilute acid and most organic solvents. It is slightly soluble in alcohol and in aqueous solutions. It exhibits a weakly acidic 4-hydroxy proton (pKa 5.1) and a weakly basic pyridyl nitrogen (pKa 1.8). The molecular weight of piroxicam is 331.35. Its molecular formula is C<sub>15</sub>H<sub>13</sub>N<sub>3</sub>O<sub>4</sub>S and it has the following structural formula:



The inactive ingredients in FELDENE capsules include: Blue 1, Red 3, lactose, magnesium stearate, sodium lauryl sulfate, starch.

NDA 18-147/S-029

Page 4

## CLINICAL PHARMACOLOGY

### Pharmacodynamics

FELDENE is a nonsteroidal anti-inflammatory drug (NSAID) that exhibits anti-inflammatory, analgesic, and antipyretic activities in animal models. The mechanism of action of FELDENE, like that of other NSAIDs, is not completely understood but may be related to prostaglandin synthetase inhibition.

### Pharmacokinetics

**Absorption:** FELDENE is well absorbed following oral administration. Drug plasma concentrations are proportional for 10 and 20 mg doses and generally peak within three to five hours after medication. The prolonged half-life (50 hours) results in the maintenance of relatively stable plasma concentrations throughout the day on once daily doses and to significant accumulation upon multiple dosing. A single 20-mg dose generally produces peak piroxicam plasma levels of 1.5 to 2 mcg/mL, while maximum drug plasma concentrations, after repeated daily ingestion of 20 mg FELDENE, usually stabilize at 3-8 mcg/mL. Most patients approximate steady state plasma levels within 7-12 days. Higher levels, which approximate steady state at two to three weeks, have been observed in patients in whom longer plasma half-lives of piroxicam occurred.

With food there is a slight delay in the rate but not the extent of absorption following oral administration. The concomitant administration of antacids (aluminum hydroxide or aluminum hydroxide with magnesium hydroxide) have been shown to have no effect on the plasma levels of orally administered piroxicam.

**Distribution:** The apparent volume of distribution of piroxicam is approximately 0.14 L/kg. Ninety-nine percent of plasma piroxicam is bound to plasma proteins. Piroxicam is excreted into human milk. The presence in breast milk has been determined during initial and long-term conditions (52 days). Piroxicam appeared in breast milk at about 1% to 3% of the maternal concentration. No accumulation of piroxicam occurred in milk relative to that in plasma during treatment.

**Metabolism:** Metabolism of piroxicam occurs by hydroxylation at the 5 position of the pyridyl side chain and conjugation of this product; by cyclodehydration; and by a sequence of reactions involving hydrolysis of the amide linkage, decarboxylation, ring contraction and N-demethylation. The biotransformation products of piroxicam metabolism are reported to not have any anti-inflammatory activity.

**Excretion:** FELDENE and its biotransformation products are excreted in urine and feces, with about twice as much appearing in the urine as in the feces. Approximately 5% of a FELDENE dose is excreted unchanged. The plasma half-life ( $T_{1/2}$ ) for piroxicam is approximately 50 hours.

### Special Populations

**Pediatric:** FELDENE has not been investigated in pediatric patients.

**Race:** Pharmacokinetic differences due to race have not been identified.

**Hepatic Insufficiency:** The effects of hepatic disease on FELDENE pharmacokinetics have not been established. However, a substantial portion of FELDENE elimination occurs by hepatic metabolism.

NDA 18-147/S-029

Page 5

Consequently, patients with hepatic disease may require reduced doses of FELDENE as compared to patients with normal hepatic function.

**Renal Insufficiency:** FELDENE pharmacokinetics have been investigated in patients with renal insufficiency. Studies indicate patients with mild to moderate renal impairment may not require dosing adjustments. However, the pharmacokinetic properties of FELDENE in patients with severe renal insufficiency or those receiving hemodialysis are not known.

### **Other Information**

In controlled clinical trials, the effectiveness of FELDENE has been established for both acute exacerbations and long-term management of rheumatoid arthritis and osteoarthritis.

The therapeutic effects of FELDENE are evident early in the treatment of both diseases with a progressive increase in response over several (8-12) weeks. Efficacy is seen in terms of pain relief and, when present, subsidence of inflammation.

Doses of 20 mg/day FELDENE display a therapeutic effect comparable to therapeutic doses of aspirin, with a lower incidence of minor gastrointestinal effects and tinnitus.

FELDENE has been administered concomitantly with fixed doses of gold and corticosteroids. The existence of a “steroid-sparing” effect has not been adequately studied to date.

## **INDICATIONS AND USAGE**

Carefully consider the potential benefits and risks of FELDENE and other treatment options before deciding to use FELDENE. Use the lowest effective dose for the shortest duration consistent with individual patient treatment goals (see **WARNINGS**).

FELDENE is indicated:

- For relief of the signs and symptoms of osteoarthritis.
- For relief of the signs and symptoms of rheumatoid arthritis.

## **CONTRAINDICATIONS**

FELDENE is contraindicated in patients with known hypersensitivity to piroxicam.

FELDENE should not be given to patients who have experienced asthma, urticaria or allergic-type reactions after taking aspirin or other NSAIDs. Severe, rarely fatal, anaphylactic-like reactions to NSAIDs have been reported in such patients (see **WARNINGS, Anaphylactoid Reactions** and **PRECAUTIONS, Preexisting Asthma**).

FELDENE is contraindicated for the treatment of peri-operative pain in the setting of coronary artery bypass graft (CABG) surgery (see **WARNINGS**).

NDA 18-147/S-029

Page 6

## WARNINGS

### **CARDIOVASCULAR EFFECTS**

#### **Cardiovascular Thrombotic Events**

Clinical trials of several COX-2 selective and nonselective NSAIDs of up to three years duration have shown an increased risk of serious cardiovascular (CV) thrombotic events, myocardial infarction, and stroke, which can be fatal. All NSAIDs, both COX-2 selective and nonselective, may have a similar risk. Patients with known CV disease or risk factors for CV disease may be at greater risk. To minimize the potential risk for an adverse CV event in patients treated with an NSAID, the lowest effective dose should be used for the shortest duration possible. Physicians and patients should remain alert for the development of such events, even in the absence of previous CV symptoms. Patients should be informed about the signs and/or symptoms of serious CV events and the steps to take if they occur.

There is no consistent evidence that concurrent use of aspirin mitigates the increased risk of serious CV thrombotic events associated with NSAID use. The concurrent use of aspirin and an NSAID does increase the risk of serious GI events (see **GI WARNINGS**).

Two large, controlled clinical trials of a COX-2 selective NSAID for the treatment of pain in the first 10-14 days following CABG surgery found an increased incidence of myocardial infarction and stroke (see **CONTRAINDICATIONS**).

#### **Hypertension**

NSAIDs, including FELDENE, can lead to onset of new hypertension or worsening of pre-existing hypertension, either of which may contribute to the increased incidence of CV events. Patients taking thiazides or loop diuretics may have impaired response to these therapies when taking NSAIDs. NSAIDs, including FELDENE, should be used with caution in patients with hypertension. Blood pressure (BP) should be monitored closely during the initiation of NSAID treatment and throughout the course of therapy.

#### **Congestive Heart Failure and Edema**

Fluid retention and edema have been observed in some patients taking NSAIDs. FELDENE should be used with caution in patients with fluid retention or heart failure.

#### **Gastrointestinal Effects - Risk of Ulceration, Bleeding and Perforation**

NSAIDs, including FELDENE, can cause serious gastrointestinal (GI) adverse events including inflammation, bleeding, ulceration, and perforation of the stomach, small intestine, or large intestine, which can be fatal. These serious adverse events can occur at any time, with or without warning symptoms, in patients treated with NSAIDs. Only one in five patients, who develop a serious upper GI adverse event on NSAID therapy, is symptomatic. Upper GI ulcers, gross bleeding, or perforation caused by NSAIDs occur in approximately 1% of patients treated for 3-6 months, and in about 2-4% of patients treated for one year. These trends continue with longer duration of use, increasing the likelihood of developing a serious GI event at some time during the course of therapy. However, even short-term therapy is not without risk.

NSAIDs should be prescribed with extreme caution in those with a prior history of ulcer disease or gastrointestinal bleeding. Patients with a *prior history of peptic ulcer disease and/or gastrointestinal bleeding* who use NSAIDs have a greater than 10-fold increased risk for developing a GI bleed

NDA 18-147/S-029

Page 7

compared to patients with neither of these risk factors. Other factors that increase the risk of GI bleeding in patients treated with NSAIDs include concomitant use of oral corticosteroids or anticoagulants, longer duration of NSAID therapy, smoking, use of alcohol, older age, and poor general health status. Most spontaneous reports of fatal GI events are in elderly or debilitated patients and therefore, special care should be taken in treating this population.

To minimize the potential risk for an adverse GI event in patients treated with an NSAID, the lowest effective dose should be used for the shortest possible duration. Patients and physicians should remain alert for signs and symptoms of GI ulcerations and bleeding during NSAID therapy and promptly initiate additional evaluation and treatment if a serious GI event is suspected. This should include discontinuation of the NSAID until a serious GI adverse event is ruled out. For high risk patients, alternate therapies that do not involve NSAIDs should be considered.

### **Renal Effects**

Long-term administration of NSAIDs has resulted in renal papillary necrosis and other renal injury. Renal toxicity has also been seen in patients in whom renal prostaglandins have a compensatory role in the maintenance of renal perfusion. In these patients, administration of a nonsteroidal anti-inflammatory drug may cause a dose-dependent reduction in prostaglandin formation and, secondarily, in renal blood flow, which may precipitate overt renal decompensation. Patients at greatest risk of this reaction are those with impaired renal function, heart failure, liver dysfunction, those taking diuretics and ACE inhibitors, and the elderly. Discontinuation of NSAID therapy is usually followed by recovery to the pretreatment state.

### **Advanced Renal Disease**

No information is available from controlled clinical studies regarding the use of FELDENE in patients with advanced renal disease. Therefore, treatment with FELDENE is not recommended in these patients with advanced renal disease. If FELDENE therapy must be initiated, close monitoring of the patient's renal function is advisable.

### **Anaphylactoid Reactions**

As with other NSAIDs, anaphylactoid reactions may occur in patients without known prior exposure to FELDENE. FELDENE should not be given to patients with the aspirin triad. This symptom complex typically occurs in asthmatic patients who experience rhinitis with or without nasal polyps, or who exhibit severe, potentially fatal bronchospasm after taking aspirin or other NSAIDs (see **CONTRAINDICATIONS** and **PRECAUTIONS, Preexisting Asthma**). Emergency help should be sought in cases where an anaphylactoid reaction occurs.

### **Skin Reactions**

NSAIDs, including FELDENE, can cause serious skin adverse events such as exfoliative dermatitis, Stevens-Johnson Syndrome (SJS), and toxic epidermal necrolysis (TEN), which can be fatal. These serious events may occur without warning. Patients should be informed about the signs and symptoms of serious skin manifestations and use of the drug should be discontinued at the first appearance of skin rash or any other sign of hypersensitivity.

NDA 18-147/S-029

Page 8

### **Other Hypersensitivity Reactions**

A combination of dermatological and/or allergic signs and symptoms suggestive of serum sickness have occasionally occurred in conjunction with the use of FELDENE. These include arthralgias, pruritus, fever, fatigue, and rash including vesiculobullous reactions and exfoliative dermatitis.

### **Pregnancy**

In late pregnancy, as with other NSAIDs, FELDENE should be avoided because it may cause premature closure of the ductus arteriosus.

## **PRECAUTIONS**

### **General**

FELDENE cannot be expected to substitute for corticosteroids or to treat corticosteroid insufficiency. Abrupt discontinuation of corticosteroids may lead to disease exacerbation. Patients on prolonged corticosteroid therapy should have their therapy tapered slowly if a decision is made to discontinue corticosteroids.

The pharmacological activity of FELDENE in reducing fever and inflammation may diminish the utility of these diagnostic signs in detecting complications of presumed noninfectious, painful conditions.

### **Hepatic Effects**

Borderline elevations of one or more liver tests may occur in up to 15% of patients taking NSAIDs including FELDENE. These laboratory abnormalities may progress, may remain unchanged, or may be transient with continuing therapy. Notable elevations of ALT or AST (approximately three or more times the upper limit of normal) have been reported in approximately 1% of patients in clinical trials with NSAIDs. In addition, rare cases of severe hepatic reactions, including jaundice and fatal fulminant hepatitis, liver necrosis and hepatic failure, some of them with fatal outcomes have been reported.

A patient with symptoms and/or signs suggesting liver dysfunction, or in whom an abnormal liver test has occurred, should be evaluated for evidence of the development of more severe hepatic reaction while on therapy with FELDENE. If clinical signs and symptoms consistent with liver disease develop, or if systemic manifestations occur (e.g., eosinophilia, rash, etc.), FELDENE should be discontinued. (see **ADVERSE REACTIONS**).

### **Renal Effects**

~~Caution should be used when initiating treatment with FELDENE in patients with considerable dehydration. It is advisable to rehydrate patients first and then start therapy with FELDENE. Caution is also recommended in patients with preexisting kidney disease (see **WARNINGS: Advanced Renal Disease**).~~

~~Because of extensive renal excretion of piroxicam and its biotransformation products less than 5% of the daily dose is excreted unchanged (see **CLINICAL PHARMACOLOGY**), lower doses of piroxicam should be anticipated in patients with impaired renal function, and they should be carefully monitored.~~

NDA 18-147/S-029

Page 9

### **Hematological Effects**

Anemia is sometimes seen in patients receiving NSAIDs, including FELDENE. This may be due to fluid retention, occult or gross GI blood loss, or an incompletely described effect upon erythropoiesis. Patients on long-term treatment with NSAIDs, including FELDENE, should have their hemoglobin or hematocrit checked if they exhibit any signs or symptoms of anemia.

NSAIDs inhibit platelet aggregation and have been shown to prolong bleeding time in some patients. Unlike aspirin, their effect on platelet function is quantitatively less, of shorter duration, and reversible. Patients receiving FELDENE who may be adversely affected by alterations in platelet function, such as those with coagulation disorders or patients receiving anticoagulants, should be carefully monitored.

### **Ophthalmologic Effects**

Because of reports of adverse eye findings with nonsteroidal anti-inflammatory agents, it is recommended that patients who develop visual complaints during treatment with FELDENE have ophthalmic evaluations.

### **Preexisting Asthma**

Patients with asthma may have aspirin-sensitive asthma. The use of aspirin in patients with aspirin-sensitive asthma has been associated with severe bronchospasm which can be fatal. Since cross-reactivity, including bronchospasm, between aspirin and other nonsteroidal anti-inflammatory drugs has been reported in such aspirin-sensitive patients, FELDENE should not be administered to patients with this form of aspirin sensitivity and should be used with caution in patients with preexisting asthma.

### ~~**Other Hypersensitivity Reactions**~~

~~A combination of dermatological and/or allergic signs and symptoms suggestive of serum sickness have occasionally occurred in conjunction with the use of FELDENE. These include arthralgias, pruritus, fever, fatigue, and rash including vesiculobullous reactions and exfoliative dermatitis.~~

NDA 18-147/S-029

Page 10

### Information for Patients

**Patients should be informed of the following information before initiating therapy with an NSAID and periodically during the course of ongoing therapy. Patients should also be encouraged to read the NSAID Medication Guide that accompanies each prescription dispensed.**

1. FELDENE, like other NSAIDs, may cause CV side effects, such as MI or stroke, which may result in hospitalization and even death. Although serious CV events can occur without warning symptoms, patients should be alert for the signs and symptoms of chest pain, shortness of breath, weakness, slurring of speech, and should ask for medical advice when observing any indicative sign or symptoms. Patients should be apprised of the importance of this follow-up (see **WARNINGS, CARDIOVASCULAR EFFECTS**).
2. FELDENE, like other NSAIDs, can cause GI discomfort and, rarely, serious GI side effects, such as ulcers and bleeding, which may result in hospitalization and even death. Although serious GI tract ulcerations and bleeding can occur without warning symptoms, patients should be alert for the signs and symptoms of ulcerations and bleeding, and should ask for medical advice when observing any indicative sign or symptoms including epigastric pain, dyspepsia, melena, and hematemesis. Patients should be apprised of the importance of this follow-up (see **WARNINGS, Gastrointestinal Effects: Risk of Ulceration, Bleeding and Perforation**).
3. FELDENE, like other NSAIDs, can cause serious skin side effects such as exfoliative dermatitis, SJS and TEN, which may result in hospitalizations and even death. Although serious skin reactions may occur without warning, patients should be alert for the signs and symptoms of skin rash and blisters, fever, or other signs hypersensitivity such as itching, and should ask for medical advice when observing any indicative signs or symptoms. Patients should be advised to stop the drug immediately if they develop any type of rash and contact their physicians as soon as possible.
4. Patients should promptly report signs or symptoms of unexplained weight gain, or edema to their physicians.
5. Patients should be informed of the warning signs and symptoms of hepatotoxicity (e.g., nausea, fatigue, lethargy, pruritus, jaundice, right upper quadrant tenderness and “flu-like” symptoms). If these occur, patients should be instructed to stop therapy and seek immediate medical therapy.
6. Patients should be informed of the signs of an anaphylactoid reaction (e.g. difficulty breathing, swelling of the face or throat). If these occur, patients should be instructed to seek immediate emergency help (see **WARNINGS**).
7. In late pregnancy, as with other NSAIDs, FELDENE should be avoided because it ~~will~~may cause premature closure of the ductus arteriosus.

NDA 18-147/S-029

Page 11

### Laboratory Tests

Because serious GI tract ulcerations and bleeding can occur without warning symptoms, physicians should monitor for signs of symptoms of GI bleeding. Patients on long-term treatment with NSAIDs should have their CBC and a chemistry profile checked periodically. If clinical signs and symptoms consistent with liver or renal disease develop, systemic manifestations occur (e.g., eosinophilia, rash, etc.) or if abnormal liver tests persist or worsen, FELDENE should be discontinued.

### Drug Interactions

**Highly Protein Bound Drugs:** FELDENE is highly protein bound and, therefore, might be expected to displace other protein bound drugs. Physicians should closely monitor patients for a change in dosage requirements when administering FELDENE to patients on other highly protein bound drugs.

**Aspirin:** When FELDENE is administered with aspirin, its protein binding is reduced, although the clearance of free FELDENE is not altered. Plasma levels of piroxicam are depressed to approximately 80% of their normal values when FELDENE is administered (20 mg/day) in conjunction with aspirin (3900 mg/day). The clinical significance of this interaction is not known; however, as with other NSAIDs, concomitant administration of piroxicam and aspirin is not generally recommended because of the potential for increased adverse effects.

**Methotrexate:** NSAIDs have been reported to competitively inhibit methotrexate accumulation in rabbit kidney slices. This may indicate that they could enhance the toxicity of methotrexate. Caution should be used when NSAIDs are administered concomitantly with methotrexate.

**ACE-Inhibitors:** Reports suggest that NSAIDs may diminish the antihypertensive effect of ACE-inhibitors. This interaction should be given consideration in patients taking NSAIDs concomitantly with ACE-inhibitors.

**Furosemide/Diuretics:** Clinical studies, as well as postmarketing observations, have shown that FELDENE can reduce the natriuretic effect of furosemide and thiazides in some patients. This response has been attributed to inhibition of renal prostaglandin synthesis. During concomitant therapy with NSAIDs, the patient should be observed closely for signs of renal failure (see **PRECAUTIONS: WARNINGS, Renal Effects**), as well as to assure diuretic efficacy.

**Lithium:** NSAIDs have produced an elevation of plasma lithium levels and a reduction in renal lithium clearance. The mean minimum lithium concentration increased 15% and the renal clearance was decreased by approximately 20%. These effects have been attributed to inhibition of renal prostaglandin synthesis by the NSAID. Thus, when NSAIDs and lithium are administered concurrently, subjects should be observed carefully for signs of lithium toxicity.

**Warfarin:** The effects of warfarin and NSAIDs on GI bleeding are synergistic, such that users of both drugs together have a risk of serious GI bleeding higher than users of either drug alone.

### Carcinogenesis, Mutagenesis, Impairment of Fertility

Subacute, acute and chronic toxicity studies have been carried out in rats, mice, dogs and monkeys. The pathology most often seen was that characteristically associated with the animal toxicology of anti-inflammatory agents: renal papillary necrosis (see **PRECAUTIONS**) and gastrointestinal lesions.

Reproductive studies revealed no impairment of fertility in animals.

NDA 18-147/S-029

Page 12

## **Pregnancy**

### ***Teratogenic Effects: Pregnancy Category C.***

Reproductive studies conducted in rats and rabbits have not demonstrated evidence of developmental abnormalities. However, animal reproduction studies are not always predictive of human response. There are no adequate and well-controlled studies in pregnant women. FELDENE is not recommended for use in pregnant women since safety has not been established in humans. Feldene should be used in pregnancy only if the potential benefit justifies the potential risk to the fetus.

### ***Nonteratogenic Effects:***

Because of the known effects of nonsteroidal anti-inflammatory drugs on the fetal cardiovascular system (closure of ductus arteriosus), use during pregnancy (particularly late pregnancy) should be avoided. In animal studies of FELDENE, gastrointestinal tract toxicity was increased in pregnant females in the last trimester of pregnancy compared to nonpregnant females or females in earlier trimesters of pregnancy.

## **Labor and Delivery**

In rat studies with NSAIDs, as with other drugs known to inhibit prostaglandin synthesis, an increased incidence of dystocia, delayed parturition, and decreased pup survival occurred. The effects of FELDENE on labor and delivery in pregnant women are unknown.

## **Nursing Mothers**

Piroxicam is excreted into human milk. The presence in breast milk has been determined during initial and long-term conditions (52 days). Piroxicam appeared in breast milk at about 1% to 3% of the maternal concentration. No accumulation of piroxicam occurred in milk relative to that in plasma during treatment. FELDENE is not recommended for use in nursing mothers.

## **Pediatric Use**

Safety and effectiveness in pediatric patients have not been established.

## **Geriatric Use**

As with any NSAID, caution should be exercised in treating the elderly (65 years and older). Most spontaneous reports of fatal GI events with NSAIDs are in the elderly or debilitated patients and, therefore, care should be taken in treating this population. In addition to a past history of ulcer disease, older age and poor general health status (among other factors) may increase the risk for GI bleeding. To minimize the potential risk of an adverse GI event, the lowest effective dose should be used for the shortest possible duration (see **WARNINGS, Gastrointestinal Effects – Risk of GI Ulceration, Bleeding and Perforation**).

As with all other NSAIDs, there is a risk of developing renal toxicity in patients in which renal prostaglandins have a compensatory role in maintenance of renal perfusion. Discontinuation of nonsteroidal anti-inflammatory drug therapy is usually followed by recovery to the pretreatment state (see **PRECAUTIONS, Renal Effects**).

In general, dose selection for an elderly patient should be cautious, usually starting at the low end of the dosing range, reflecting a greater frequency of impaired drug elimination and of concomitant disease or other drug therapy.

NDA 18-147/S-029  
Page 13

### ADVERSE REACTIONS

In patients taking FELDENE or other NSAIDs, the most frequently reported adverse experiences occurring in approximately 1-10% of patients are:

**Cardiovascular System:** Edema.

**Digestive System:** Anorexia, abdominal pain, constipation, diarrhea, dyspepsia, elevated liver enzymes, flatulence, gross bleeding/perforation, heartburn, nausea, ulcers (gastric/duodenal), vomiting.

**Hemic and Lymphatic System:** Anemia, increased bleeding time.

**Nervous System:** Dizziness, headache.

**Skin and Appendages:** Pruritus, rash.

**Special Senses:** Tinnitus.

**Urogenital System:** Abnormal renal function.

Additional adverse experiences reported occasionally include:

**Body As a Whole:** Fever, infection, sepsis.

**Cardiovascular System:** Congestive heart failure, hypertension, tachycardia, syncope.

**Digestive System:** Dry mouth, esophagitis, gastritis, glossitis, hematemesis, hepatitis, jaundice, melena, rectal bleeding, stomatitis.

**Hemic and Lymphatic System:** Ecchymosis, eosinophilia, epistaxis, leukopenia, purpura, petechial rash, thrombocytopenia.

**Metabolic and Nutritional:** Weight changes.

**Nervous System:** Anxiety, asthenia, confusion, depression, dream abnormalities, drowsiness, insomnia, malaise, nervousness, paresthesia, somnolence, tremors, vertigo.

**Respiratory System:** Asthma, dyspnea.

**Skin and Appendages:** Alopecia, bruising, desquamation, erythema, photosensitivity, sweat.

**Special Senses:** Blurred vision.

**Urogenital System:** Cystitis, dysuria, hematuria, hyperkalemia, interstitial nephritis, nephrotic syndrome, oliguria/polyuria, proteinuria, renal failure.

Other adverse reactions which occur rarely are:

NDA 18-147/S-029

Page 14

**Body As a Whole:** Anaphylactic reactions, appetite changes, death, flu-like syndrome, pain (colic), serum sickness.

**Cardiovascular System:** Arrhythmia, exacerbation of angina, hypotension, myocardial infarction, palpitations, vasculitis.

**Digestive System:** Eructation, liver failure, pancreatitis.

**Hemic and Lymphatic System:** Agranulocytosis, hemolytic anemia, aplastic anemia, lymphadenopathy, pancytopenia.

**Hypersensitivity:** Positive ANA.

**Metabolic and Nutritional:** Hyperglycemia, hypoglycemia.

**Nervous System:** Akathisia, convulsions, coma, hallucinations, meningitis, mood alterations.

**Respiratory:** Respiratory depression, pneumonia.

**Skin and Appendages:** Angioedema, toxic epidermal necrosis, erythema multiforme, exfoliative dermatitis, onycholysis, Stevens-Johnson syndrome, urticaria, vesiculobullous reaction.

**Special Senses:** Conjunctivitis, hearing impairment, swollen eyes.

## OVERDOSAGE

Symptoms following acute NSAID overdoses are usually limited to lethargy, drowsiness, nausea, vomiting, and epigastric pain, which are generally reversible with supportive care. Gastrointestinal bleeding can occur. Hypertension, acute renal failure, respiratory depression and coma may occur, but are rare. Anaphylactoid reactions have been reported with therapeutic ingestion of NSAIDs, and may occur following an overdose.

Patients should be managed by symptomatic and supportive care following an NSAID overdose. There are no specific antidotes. Emesis and/or activated charcoal (60-100 g in adults, 1-2 g/kg in children) and/or osmotic cathartic may be indicated. The long plasma half-life of piroxicam should be considered when treating an overdose with piroxicam. Experiments in dogs have demonstrated that the use of multiple-dose treatments with activated charcoal could reduce the half-life of piroxicam by more than 50% and systemic bioavailability by as much as 37% when activated charcoal is given as late as 6 hours after ingestion of piroxicam. Forced diuresis, alkalization of urine, hemodialysis, or hemoperfusion may not be useful due to high protein binding.

## DOSAGE AND ADMINISTRATION

Carefully consider the potential benefits and risks of FELDENE and other treatment options before deciding to use FELDENE. Use the lowest effective dose for the shortest duration consistent with individual patient treatment goals (see **WARNINGS**).

After observing the response to initial therapy with FELDENE, the dose and frequency should be adjusted to suit an individual patient's needs.

NDA 18-147/S-029  
Page 15

For the relief of rheumatoid arthritis and osteoarthritis, the recommended dose is 20 mg given orally once per day. If desired, the daily dose may be divided. Because of the long half-life of FELDENE, steady-state blood levels are not reached for 7-12 days. Therefore, although the therapeutic effects of FELDENE are evident early in treatment, there is a progressive increase in response over several weeks and the effect of therapy should not be assessed for two weeks.

### HOW SUPPLIED

FELDENE® Capsules for oral administration:

Bottles of 100:	20 mg (NDC 0069-3230-66) maroon #323
Bottles of 500:	20 mg (NDC 0069-3230-73) maroon #323

**Rx only**

©2005 PFIZER INC

*Distributed by:*  
 **Pfizer Labs**  
Division of Pfizer Inc, NY, NY

LAB 0206-XX

Revised July 2005

### Medication Guide

for

### Non-Steroidal Anti-Inflammatory Drugs (NSAIDs)

(See the end of this Medication Guide for a list of prescription NSAID medicines.)

---

## **What is the most important information I should know about medicines called Non-Steroidal Anti-Inflammatory Drugs (NSAIDs)?**

**NSAID medicines may increase the chance of a heart attack or stroke that can lead to death.** This chance increases:

- with longer use of NSAID medicines
- in people who have heart disease

NDA 18-147/S-029  
Page 16

**NSAID medicines should never be used right before or after a heart surgery called a “coronary artery bypass graft (CABG).”**

**NSAID medicines can cause ulcers and bleeding in the stomach and intestines at any time during treatment. Ulcers and bleeding:**

- can happen without warning symptoms
- may cause death

**The chance of a person getting an ulcer or bleeding increases with:**

- taking medicines called “corticosteroids” and “anticoagulants”
- longer use
- smoking
- drinking alcohol
- older age
- having poor health

**NSAID medicines should only be used:**

- exactly as prescribed
- at the lowest dose possible for your treatment
- for the shortest time needed

---

### **What are Non-Steroidal Anti-Inflammatory Drugs (NSAIDs)?**

NSAID medicines are used to treat pain and redness, swelling, and heat (inflammation) from medical conditions such as:

- different types of arthritis
- menstrual cramps and other types of short-term pain

### **Who should not take a Non-Steroidal Anti-Inflammatory Drug (NSAID)?**

**Do not take an NSAID medicine:**

- if you had an asthma attack, hives, or other allergic reaction with aspirin or any other NSAID medicine
- for pain right before or after heart bypass surgery

**Tell your healthcare provider:**

- about all your medical conditions.
- about all of the medicines you take. NSAIDs and some other medicines can interact with each other and cause serious side effects. **Keep a list of your medicines to show to your healthcare provider and pharmacist.**
- if you are pregnant. **NSAID medicines should not be used by pregnant women late in their pregnancy.**
- if you are breastfeeding. **Talk to your doctor.**

## What are the possible side effects of Non-Steroidal Anti-Inflammatory Drugs (NSAIDs)?

<b>Serious side effects include:</b>	<b>Other side effects include:</b>
<ul style="list-style-type: none"><li>● heart attack</li><li>● stroke</li><li>● high blood pressure</li><li>● heart failure from body swelling (fluid retention)</li><li>● kidney problems including kidney failure</li><li>● bleeding and ulcers in the stomach and intestine</li><li>● low red blood cells (anemia)</li><li>● life-threatening skin reactions</li><li>● life-threatening allergic reactions</li><li>● liver problems including liver failure</li><li>● asthma attacks in people who have asthma</li></ul>	<ul style="list-style-type: none"><li>● stomach pain</li><li>● constipation</li><li>● diarrhea</li><li>● gas</li><li>● heartburn</li><li>● nausea</li><li>● vomiting</li><li>● dizziness</li></ul>

### Get emergency help right away if you have any of the following symptoms:

- shortness of breath or trouble breathing
- chest pain
- weakness in one part or side of your body
- slurred speech
- swelling of the face or throat

### Stop your NSAID medicine and call your healthcare provider right away if you have any of the following symptoms:

- nausea
- more tired or weaker than usual
- itching
- your skin or eyes look yellow
- stomach pain
- flu-like symptoms
- vomit blood
- there is blood in your bowel movement or it is black and sticky like tar
- unusual weight gain
- skin rash or blisters with fever
- swelling of the arms and legs, hands and feet

These are not all the side effects with NSAID medicines. Talk to your healthcare provider or pharmacist for more information about NSAID medicines.

### Other information about Non-Steroidal Anti-Inflammatory Drugs (NSAIDs)

- Aspirin is an NSAID medicine but it does not increase the chance of a heart attack. Aspirin can cause bleeding in the brain, stomach, and intestines. Aspirin can also cause ulcers in the stomach and intestines.
- Some of these NSAID medicines are sold in lower doses without a prescription (over-the-counter). Talk to your healthcare provider before using over-the-counter NSAIDs for more than 10 days.

### NSAID medicines that need a prescription

<b>Generic Name</b>	<b>Tradename</b>
Celecoxib	Celebrex
Diclofenac	Cataflam, Voltaren, Arthrotec (combined with misoprostol)
Diflunisal	Dolobid

NDA 18-147/S-029  
Page 18

<b>Generic Name</b>	<b>Tradename</b>
Etodolac	Lodine, Lodine XL
Fenoprofen	Nalfon, Nalfon 200
Flurbiprofen	Ansaid
Ibuprofen	Motrin, Tab-Profen, Vicoprofen (combined with hydrocodone), Combunox (combined with oxycodone)
Indomethacin	Indocin, Indocin SR, Indo-Lemmon, Indomethagan
Ketoprofen	Oruvail
Ketorolac	Toradol
Mefenamic Acid	Ponstel
Meloxicam	Mobic
Nabumetone	Relafen
Naproxen	Naprosyn, Anaprox, Anaprox DS, EC-Naproxyn, Naprelan, Naprapac (copackaged with lansoprazole)
Oxaprozin	Daypro
Piroxicam	Feldene
Sulindac	Clinoril
Tolmetin	Tolectin, Tolectin DS, Tolectin 600

*This Medication Guide has been approved by the U.S. Food and Drug Administration.*